

Meraki Location Services

Client and Asset Tracking

Integrated Location Tracking

Meraki Client Location Services allow administrators to accurately locate wireless clients quickly and easily on a custom floor plan or map without requiring any additional hardware, software or licenses. Non-WiFi clients can also be tracked with Meraki Enterprise networks in conjunction with 3rd party asset tag tracking solutions from Meraki technology partners such as Ekahau Real-Time Location Services.

Key Benefits:

- Uses existing wireless LAN infrastructure - no new hardware or software
- Built-in Google Maps and custom floor plan support
- No configuration, setup or training required
- Scales to tens of thousands of clients per network
- Integrates with 3rd party asset tag tracking solutions

Location is Critical

Knowing the physical location of mobile assets saves valuable time and money in many environments. In healthcare organizations, costly medical equipment must be tracked down to serve patients and for maintenance. In retail environments, handheld scanners can easily be misplaced, and in offices and classrooms, laptops and iPhones go missing all too frequently. In addition, detailed knowledge of client location can be invaluable to helpdesk personnel for troubleshooting client issues.

Powerful Visualization Tool

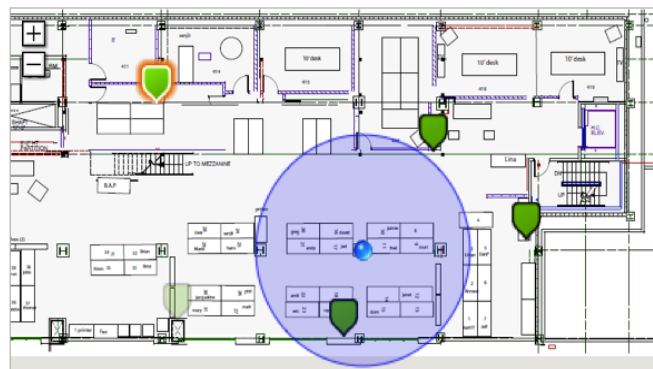
Meraki's Client Location Services allows administrators to locate wireless clients quickly and easily, using existing Meraki wireless LAN infrastructure. With Client Location Services, administrators can view the location of wireless clients on a custom floor plan or map. Additionally, Client Location Services includes Google Maps integration for tracking clients in campus or outdoor deployments – administrators can view clients on map, satellite, or hybrid views via a simple toggle.

Remote Client Management

Client Location Services integrates seamlessly with Meraki's Client Fingerprinting technology, which dashboard, making Client Location Services ideal for distributed, multi-site, and remotely managed environments enables administrators to identify clients by device name, operating system, etc. An administrator can, for example, locate an individual client by searching for "John's iPhone", or search for "Windows 7" to see the locations of all laptops running Microsoft Windows 7.

Approximate location

Based on data from 4 APs between Dec 30 09:05 and Dec 30 15:24



Advanced Triangulation Algorithms

Client Location Services operates by intelligently triangulating client location using the signal strength of multiple access points that "see" the client. Location can be determined with as few as three access points, making Client Location Services equally suited to small branches and large campuses. Advanced triangulation techniques employ calibrated weighted averages and AP selection algorithms to ensure accuracy.

Asset Tag Tracking

Meraki wireless LANs can also integrate with 3rd party Real-Time Location Services (RTLS) solutions from Meraki technology partners such as Ekahau to enable tracking of non-WiFi assets such as golf carts, hospital beds, and heavy machinery using asset tags.



Ordering Information

- Available on all Meraki Enterprise networks at no additional cost
- No additional hardware needed